



**SHORINGCO**  
THE SHORING SPECIALIST

# Capability Statement

June 2021

ABN: 80 625 085 225

Phone : (02) 9738 5007

website: [www.shoringco.com.au](http://www.shoringco.com.au)

Enquires : [info@shoringco.com.au](mailto:info@shoringco.com.au)

Address: 14/17 George Young St, Auburn NSW, 2144

Tenders : [estimates@shoringco.com.au](mailto:estimates@shoringco.com.au)

Shoringco PTY LTD



# 1. Company overview

Here at ShoringCo, we take our pride in all our work with a strong track record of delivering small to large projects for commercial and residential sectors with quality and professionalism guaranteed. How we guarantee this is by the staff we employ to ensure the works are completed right the first time. We work closely to assist all stakeholders involved in the project to provide all works are undertaken in a timely manner and assist in the resolution of any potential construction problems.

With our strong focus on safety, quality finishes and adherence to project timelines can be evident from all our costumers completed projects.

Shoringco has its own high standard risk mitigation procedures to ensure all measures have been take continually improve on safety and quality of work and keep ahead of industry standards. Through the combination of our high level of quality, time and scope we have also established competitive rates with our proven results in winning tenders.

With our office in the heart of Sydney we are familiar with regional conditions and can respond quickly to local problems. Our ability to innovate and develop efficient, cost effective alternative solutions keeps Shoringco at the forefront of the industry. We are renowned for our ability to tackle and solve the most difficult jobs.

Our design team look at every project with a view for delivering the project in a cost efficient, timely manner with superior quality finish. The earlier our involvement the more opportunity we must add value to your project. It is this ability that gives us our competitive advantage – much of our work is done on a design and construct basis.



## 2. Products and Techniques

The range and variety of products and services offered by Shoringco is made possible by the versatility of the high quality equipment that comprises most early works of residential and commercial projects. The realisation of this achievement, however, comes courtesy of the commitment, dedication, skill and expertise of the staff and management of the company.



Our main products:

- Design and Construct
- Shoring Piling Walls
- Shotcrete
- Anchors
- Soil Nails
- Capping Beams
- Structural Bracing
- Foundation Piles

With our strong relationships with our partners, along our main products we also provide services:

- Excavation
- Demolition
- Asbestos Removal
- Bentonite Carpeting
- Screw Piles





## 2.1. Design and Construct

ShoringCo maintains a strong relationship with its partnered Structural Engineers at ABVD. Any Design passed along us has the potential for massive savings for our client while adhering strictly to the Australian Standards. ABVD is a design Consultancy that shares our passion with over 20 years of industry experience.

**Our design team look at every project with a view for delivering the project in a cost efficient, timely manner with a superior quality finish.**





76-94 Lakeside Parade Jordan Springs, NSW

## 2.2. Shoring Pile Walls

Retaining walls to facilitate basement excavations are a common requirement for new structures in urban environments. Shoringco is superbly equipped to install a variety of shoring systems to cater for ground conditions ranging from cohesive semi-self-supporting soils, where soldier piles with shotcrete infill panels provide an economical solution, to water charged non-cohesive sands, where impermeable, continuous walls are required.

Considering Financial and Structural variables Shoringco is able to preform the most optimum solution for costumer needs and provide all the combinations of methods coming with shoring piles.

- |   |   |  |   |           |
|---|---|--|---|-----------|
| <ul style="list-style-type: none"> <li>• Soldier Piles</li> <li>• Contiguous Piles</li> <li>• Secant walls</li> </ul> | + | <ul style="list-style-type: none"> <li>• Anchors</li> <li>• Struts</li> <li>• Steel Bracing</li> <li>• Hydraulic Bracing</li> <li>• Waler Beams</li> </ul> | + | Shotcrete |
|---|---|--|---|-----------|

Penrith Leagues Club, NSW



## 2.2. Shoring Pile Walls



30 Beach Street Coogee, NSW



Rhodes, NSW



4-18 Doncaster Ave, Kensington, NSW

## 2.2. Shoring Pile Walls

With access to ShoringCo's four Piling Rigs, you can be assured that your project will be underway without any delay from the get-go. With the addition of the Jean Lutz Piling System on all our piling rigs, you can be sure that each pile is drilled perfectly to depth with the correct amount of concrete injection.



**ShoringCo are experts at:**

- Bored/Driven Piles
- Continuous Flight Augers (CFA)
- Contiguous and Secant Pile Walls
- Restricted Access Piles

**ShoringCo's quality assurance provides:**

- Inspection and Test Planning
- Pile Logs
- Workmanship Warranty as per Australian Standards

ShoringCo offers options to Supply,  
Drill & Install or just Drill &  
Install for your convenience.





**SHORINGCO**  
THE SHORING SPECIALIST

### Shotcrete

---

At ShoringCo, we can provide all the required services for shotcreting inhouse. We can organise all of your preparation work which includes drilling and dowelling, meshing and steel fixing, installation of strip drain and drilling of weepholes. Once all of the preparation work is set in place, we will then complete the pumping and spraying of shotcrete with shotcreting finishes that consist of gun, screed, wood float or sponge.

#### **ShoringCo's quality assurance provides:**

- Inspection and Test Planning
- Anchor Logs
- Workmanship Warranty as per Australian Standards

**With our office in the heart of Sydney we are familiar with regional conditions and are able to respond quickly to local problems.**





**SHORINGCO**  
THE SHORING SPECIALIST

## 2.4. Anchors and Soil Nails

ShoringCo provide you with an all inclusive anchoring solution for temporary or permanent anchor options in rock or sand. We can also provide options to soil nail anchor batters with shotcrete to provide a safe retention system. Our prices always include the removal of temporary anchors from your project once they are not required.



## 2.5. Structural Bracing

With the advantage of being in partnership with AYM Steel fabrications, ShoringCo provides structural bracing walers beams ranging from Parallel Flange Channel (PFC), Universal Columns (UC) and Square Hollow Sections (SHS) to you for almost at cost prices when included in the shoring project. Be at ease knowing that the fabrication, supply and installation will be exactly matched to meet you your project requirements.



**SHORINGCO**  
THE SHORING SPECIALIST

**We guarantee our price and  
commitment to your project.  
Contact us to have your  
project priced today by our  
estimators.**



## 2.6. Foundation Piles

Pile Foundations is a core activity of Shoringco and all of the major installation rigs can be configured for the installation of a variety of pile types.

The Water level, the Ground Specifications, the Pile Diameter, and Drill Depth are the variants that affect the choice of methodology.

Here at ShoringCo we are able to provide a wide range of Piling methods:

- Bored Piles or Cased Bored Piles
- Continuous Flight Auger (CFA) Piles
- Large Diameter Auger (LDA) Piles
- Rotary Auger Displacement Piles



**SHORINGCO**  
THE SHORING SPECIALIST

# 3. Equipment

Shoringco understands its dependence on, amongst other factors, the importance of efficient, reliable plant and equipment to facilitate the execution and delivery of the projects that it undertakes. This recognition underpins the ongoing commitment to the use of state of the art; purpose built installation rigs sourced from the premier manufacturers in Europe, fitted with electronic monitoring equipment to ensure Quality Control of all applications. The following items of major equipment are owned by the company

## 3.1. Principal Installation Rigs

- Soilmec SR30 (CFA + LDA)
- Enteco E300 (CFA + LDA)
- Enteco E300 (CFA + LDA)
- XCMG XR130 (CFA + LDA)

## 3.2. Anchor Installation Rigs

- Sandvik DP1100
- Soilmec SM15

## 3.3. Rig Attachments

- Rotary drive – 294kN.m x 2
- Rotary drive – 252kN.m
- Rotary drive – 250kN.m
- Double rotary drive – 300/150kN.m

## 3.4. Hydraulic Excavators

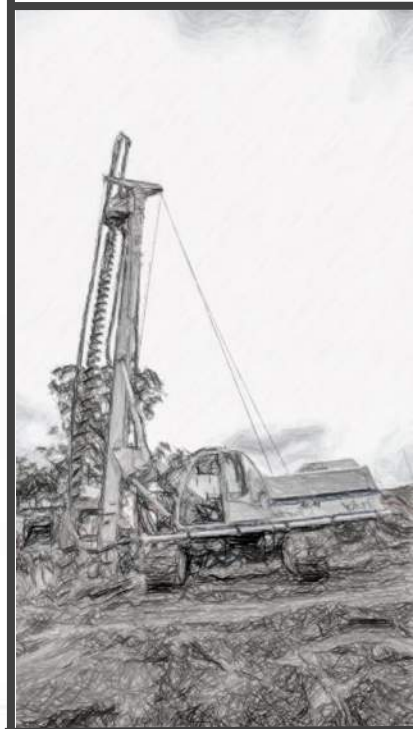
- 2 x Excavator 5.5 t
- 2 x Excavator 8t
- 1 x Excavator 22t
- 1 x Excavator 30t

## 3.5. Concrete Equipment

- 1 x Tracked Concrete Line Pump (60 m<sup>3</sup>/hr)
- 1 x Tracked Concrete Line Pump (80 m<sup>3</sup>/hr)
- 2 x Grout Batching Mixers



**Recording of Drilling Parameters with the Jean Lutz System**

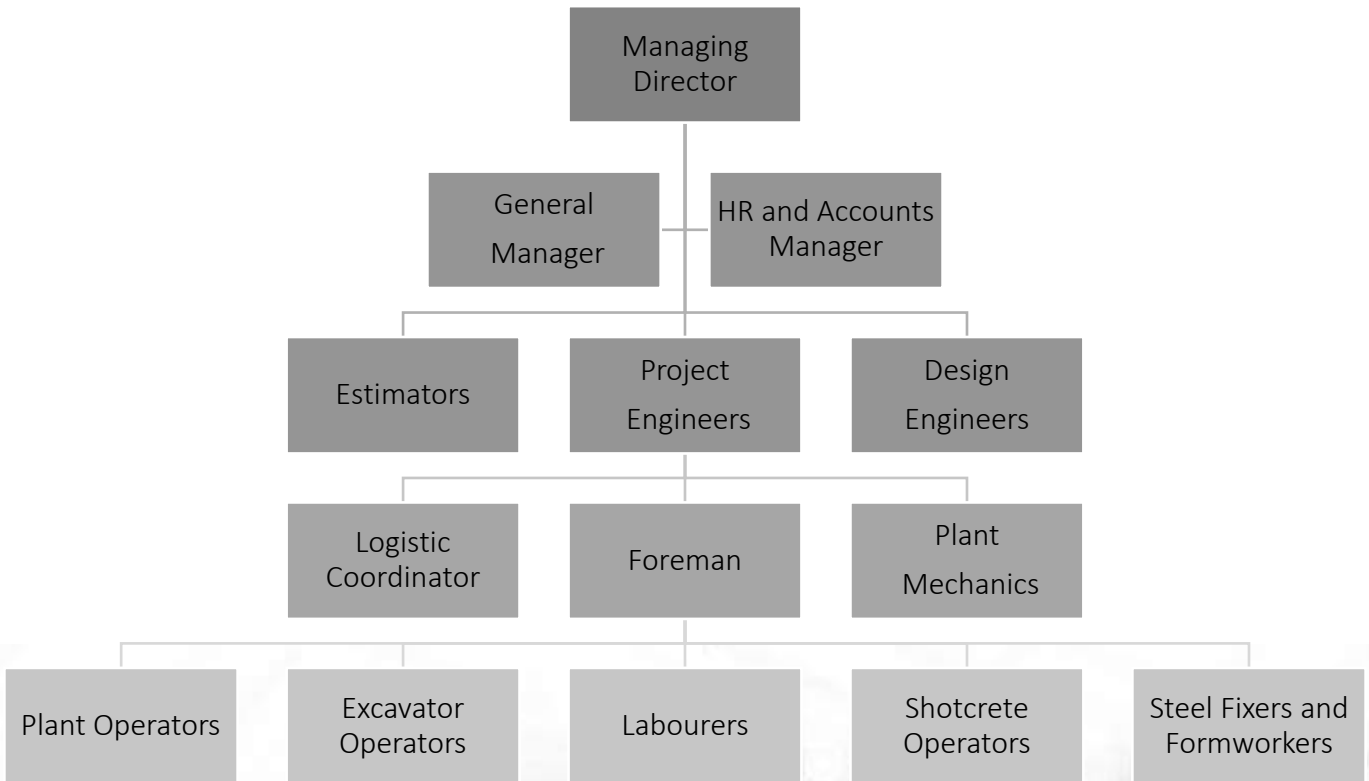


# 4. Employees and Key Personnel

At Shoringco we understand that our employees are our most valuable asset. We foster the 'family' environment and pride ourselves on ensuring that everyone in our team has a voice and is a contributing factor in the overall success of the business. We are pleased and proud to say that a majority of our employees and indeed key employees have been with us since the inception to date. This is testament to our people focus.

HR is focused and committed to the policy ensuring the company provides a workplace environment that is free from coercion, intimidation or harassment.

Shoringco places great emphasis on attracting and rewarding the best people and is committed to providing a safe and productive work environment.



## 5. Safety, Health, Environmental and Quality Policy

At Shoringco, company policy is based on the belief that the well-being of employees at work as well as other people affected by the company's activities is the major priority and must be observed, during all work performed by, or on behalf of, the company. Shoringco works in collaboration with Compliance in customising systems and policies to ensure that they are implemented and managed in an efficient manner, whilst complying with all relevant legislation state and national guidelines (AS4801) and are updated regularly.

HR focus and commitment to policy ensures that the company provides a work place environment that targets the elimination or control of all risks. Emphasis is placed on continuous improvement in performance and consistent delivery of projects with ZERO accidents and ZERO environmental incidents. This approach gives equal priority to the health and safety of all people who are affected by the company's activities, including employees, contractors, subcontractors, apprentices and employers.

Shoringco understands that all matters relating to SHEQ are of prime importance to its business. It is a company that cares about its corporate and its social responsibility and is always looking at managing and improving the impact of its systems.

Shoringco works together with its clients and suppliers to ensure that SHEQ is embedded in everything it does; it is 100% committed to protecting and improving the environment at all of its sites by adopting best practice, to minimise defects and improve environmental performance at all stages of work, from design to construction.

